

ARTISTRY

BEING A REPLAT OF TRACT "GH", ALTON PCD,
AS RECORDED IN PLAT BOOK 118, PAGES 197 THROUGH 206, OF THE PUBLIC RECORDS OF PALM BEACH COUNTY, FLORIDA,
LYING IN SECTIONS 26 AND 35, TOWNSHIP 41 SOUTH, RANGE 42 EAST, CITY OF PALM BEACH GARDENS, PALM BEACH COUNTY, FLORIDA

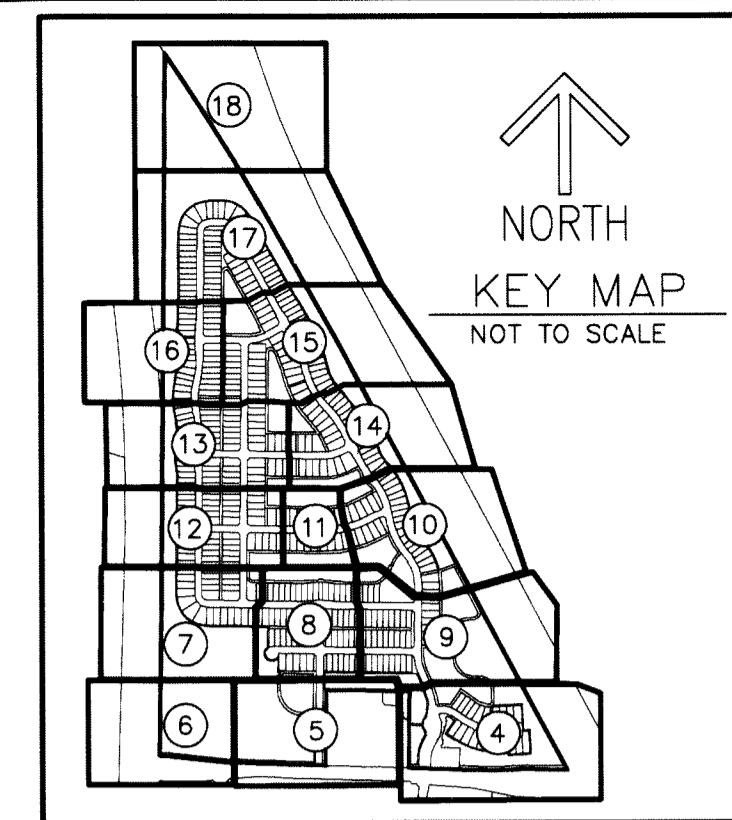
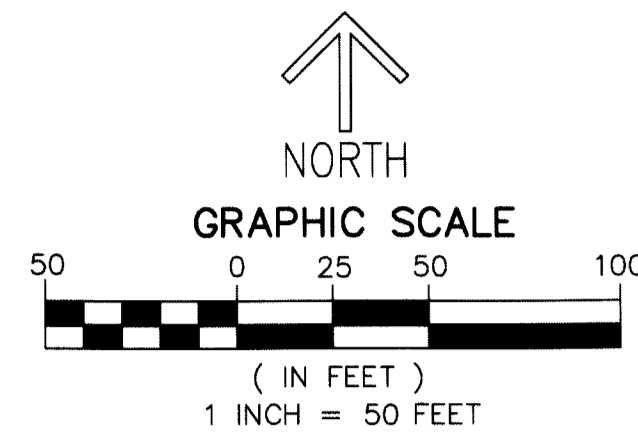
THIS INSTRUMENT PREPARED BY
DAVID P. LINDLEY

OF
CAULFIELD and WHEELER, INC.

SURVEYORS - ENGINEERS - PLANNERS
7900 GLADES ROAD, SUITE 100
BOCA RATON, FLORIDA 33434 - (561)392-1991
CERTIFICATE OF AUTHORIZATION NO. LB3591
JULY 2017

LEGEND/ABBREVIATIONS

- CL - CENTERLINE
- Δ - DELTA (CENTRAL ANGLE)
- CB - CHORD BEARING
- CD - CHORD DISTANCE
- L - ARC LENGTH
- LAE - LIMITED ACCESS EASEMENT
- LB - LICENSED BUSINESS
- LSE - LIFT STATION EASEMENT
- O.R.B. - OFFICIAL RECORD BOOK
- R - RADIUS
- (R) - INDICATES RADIAL LINE
- SUAE - SEACOAST UTILITY AUTHORITY EASEMENT
- UE - UTILITY EASEMENT
- WME - WATER MANAGEMENT EASEMENT
- PRM - DENOTES PERMANENT REFERENCE MONUMENT
- - DENOTES PERMANENT CONTROL POINT

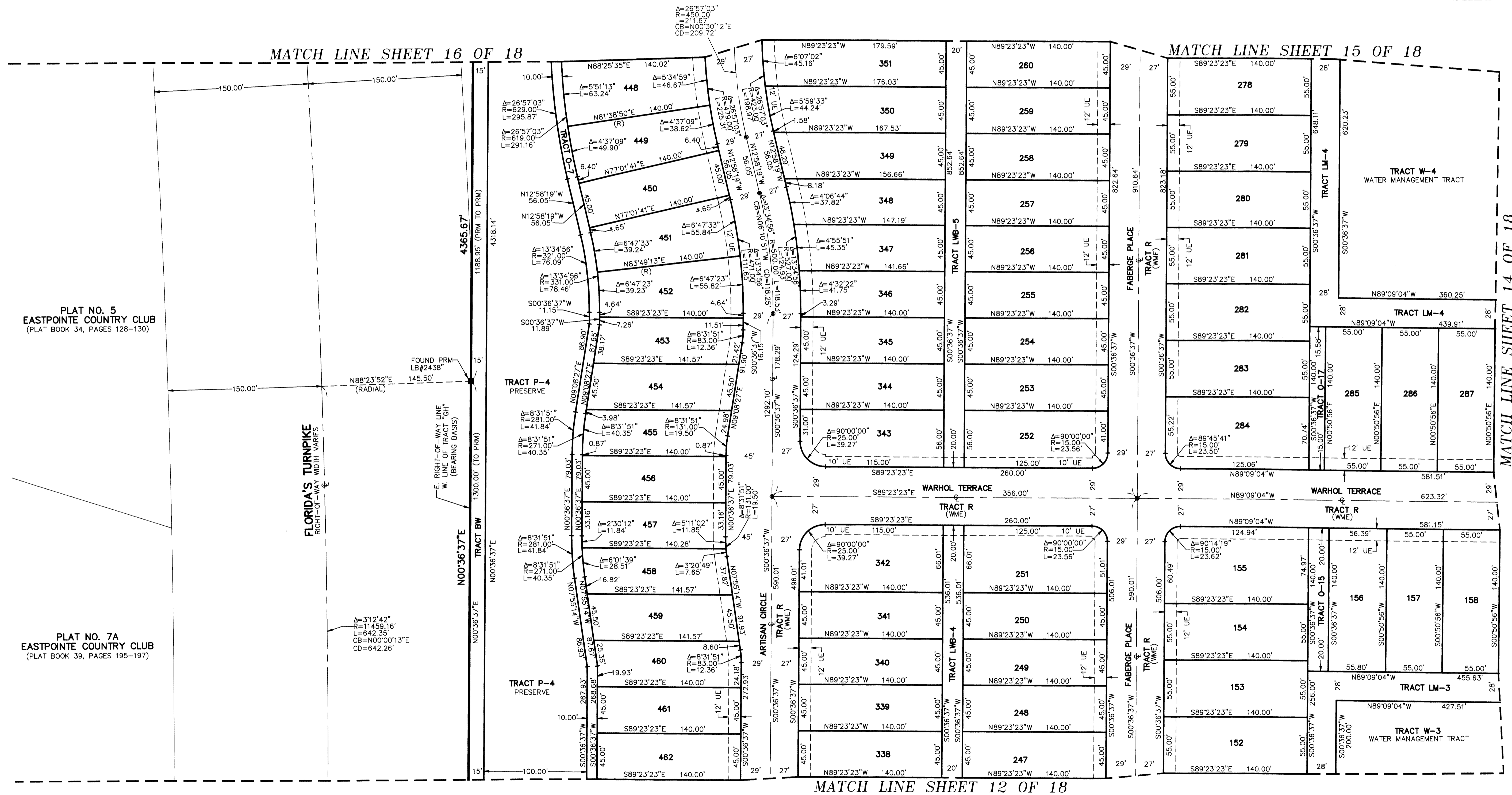


38

STATE OF FLORIDA
COUNTY OF PALM BEACH
THIS PLAT WAS FILED FOR
RECORD AT _____ M.
THIS _____ DAY OF _____
A.D. 20____ AND DULY RECORDED
IN PLAT BOOK _____ ON
PAGES _____ AND _____
SHARON R. BOCK
CLERK AND COMPTROLLER

BY: _____
DEPUTY CLERK

SHEET 13 OF 18



PLAT NO. 5
EASTPOINTE COUNTRY CLUB
(PLAT BOOK 34, PAGES 128-130)

PLAT NO. 7A
EASTPOINTE COUNTRY CLUB
(PLAT BOOK 39, PAGES 195-197)

FLORIDA'S TURNPIKE
RIGHT-OF-WAY WIDTH VARIES

E. RIGHT-OF-WAY LINE
W. LINE OF TRACT "GH"
(BEARING BASIS)

FOUND PRM
LB#2438

TRACT P-4
PRESERVE

TRACT P-4
PRESERVE

TRACT R (WME)

TRACT R (WME)

TRACT LWB-4

TRACT LWB-4

TRACT LWB-5

TRACT LWB-5

TRACT R (WME)

TRACT R (WME)

TRACT LM-4

TRACT LM-3

TRACT W-4
WATER MANAGEMENT TRACT

TRACT W-3
WATER MANAGEMENT TRACT